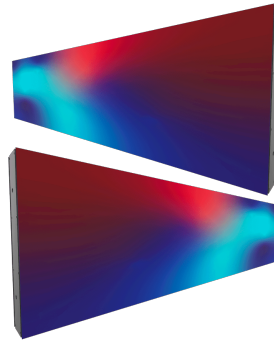


375 IN Double



| | P1.95 | P2.5 | P2.9 | P3.9 |
|--|---|-----------|-----------------|------------------|
| MODULE PARAMETERS | | | | |
| Pixel pitch | 1.95 mm | 2.5 mm | 2.98 mm | 3.91 mm |
| Module size | 250 x 250 mm | | | |
| LED type | SMD1515 | | | SMD 2020 |
| Module resolution | 128 X 128 | 100 x 100 | 84 x 84 | 64 x 64 |
| CABINET SPECIFICATIONS | | | | |
| Cabinet size | 1,000 x 250 x 33 mm 750 x 250 x33 mm 500 x 250 x33 mm | | | |
| Cabinet Materials | Aluminium | | | |
| TECHNICAL SPECIFICATIONS | | | | |
| Weight | 31.2 Kg/sqm | | | |
| Brightness | 800 nits | | 800 -1,000 nits | 1,000-1,200 nits |
| Contrast Ratio | 5,000:1 | | | |
| Viewing Angle | 160°V - 160°H | | | |
| Gray level | 14 / 16 Optical | | | |
| Refresh Rate | 3.840 Hz | | | |
| Power Input | AC100-240V | | | |
| Power consumption Maximun | 800 W/m2 | | | |
| Power consumption Average | 100-250 W/m2 | | | |
| Life--hours | > 100,000 Hrs | | | |
| IP grade | IP43 | | | |
| Operating Temperature | from -20°C~60°C | | | |
| Storage Humidity | 10% - 90% RH | | | |
| Maintenance access | Front | | | |
| ECOACTIVE FEATURES | | | | |
| Nox & Sox Abatement | 50.03% | | | |
| Certification of pollution abetment | ISO 22197 from Fraunhofer institut | | | |
| Antidust | Yes | | | |
| Self-cleaning | Yes | | | |
| Anti-bacterial | Yes | | | |