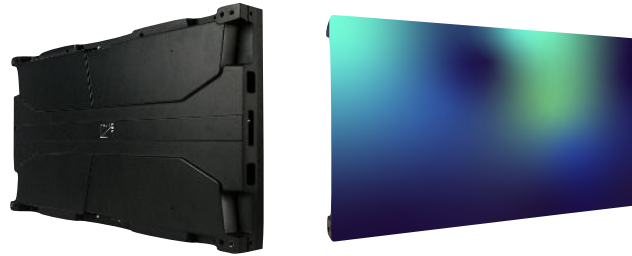


375 IN The Best


P. 0.7
P0.9
P1.2
P1.5
P1.9

MODULE PARAMETERS					
Pixel pitch	0.79	0.95	1.27	1.58	1.90
Module size	152.4 X 114.3				
LED type	Flip Chip COB				
Module resolution	192*144	160*120	128*96	96*72	80*60
CABINET SPECIFICATIONS					
Cabinet size	609.6 * 342.9 * 59,7 mm				
Cabinet Materials	Die-casting aluminum				
TECHNICAL SPECIFICATIONS					
Weight	34 Kg/sqm				
Surface finish	matte				
Brightness	600 - 1.200 nits				
Viewing Angle	179°V - 179°H				
Contrast Ratio	26,000:1				
Gray level	16				
Refresh Rate	3,840 Hz				
Power Input	110 - 220 V				
Power consumption Maximun	480 W				
Power consumption Average	160 W				
Life--hours	> 100,000				
IP grade	IP54 Front / IP43 Back				
Shock Prook	IK 7				
Operating Temperature	from -20°C~60°C				
Storage Humidity	10% - 90% RH				
Maintenance access	Front or Rear				
ECOACTIVE FEATURES					
Nox & Sox Abatement	50.03%				
Certification of pollution abetment	ISO 22197 from Fraunhofer institut				
Antidust	Yes				
Self-cleaning	Yes				
Anti-bacterial	Yes				